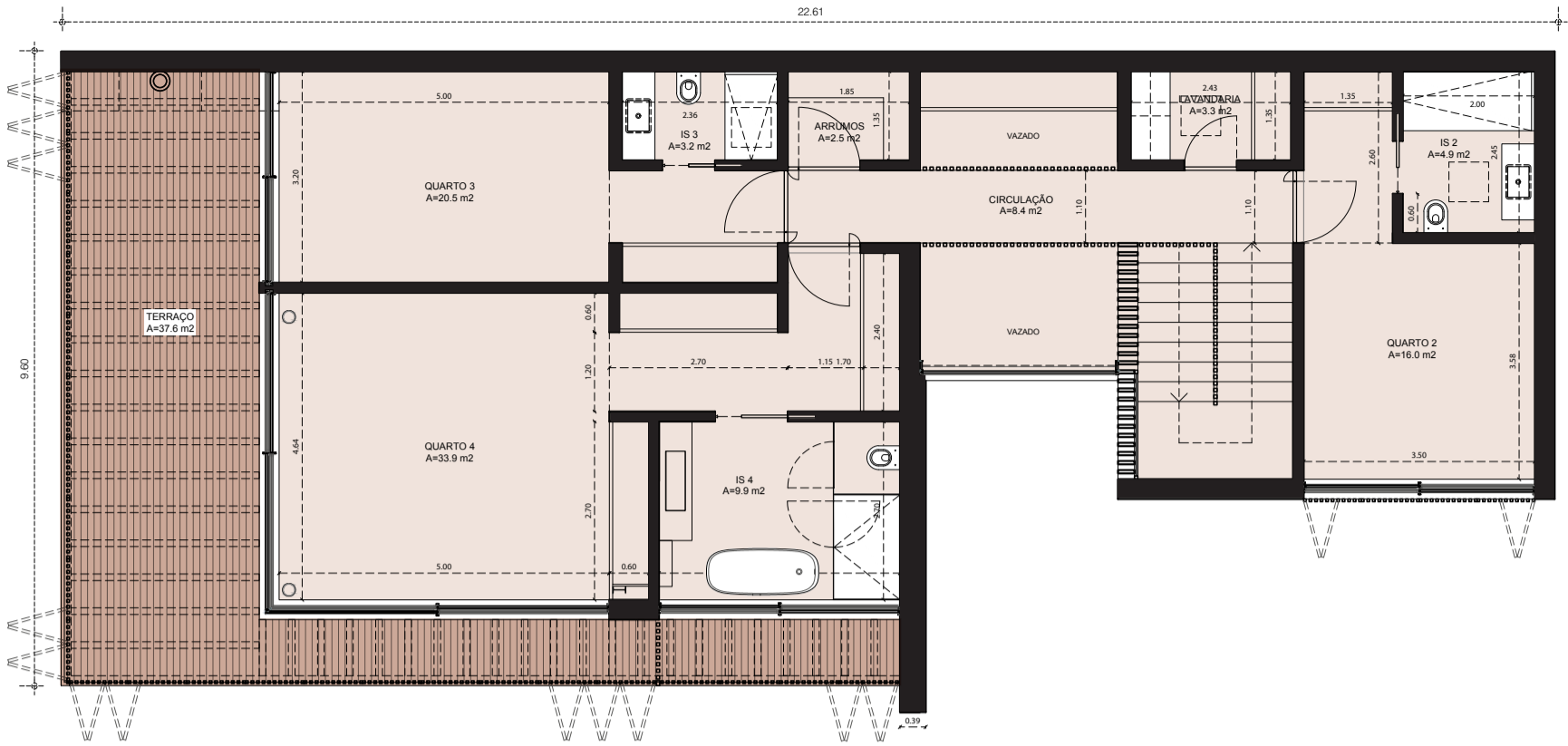


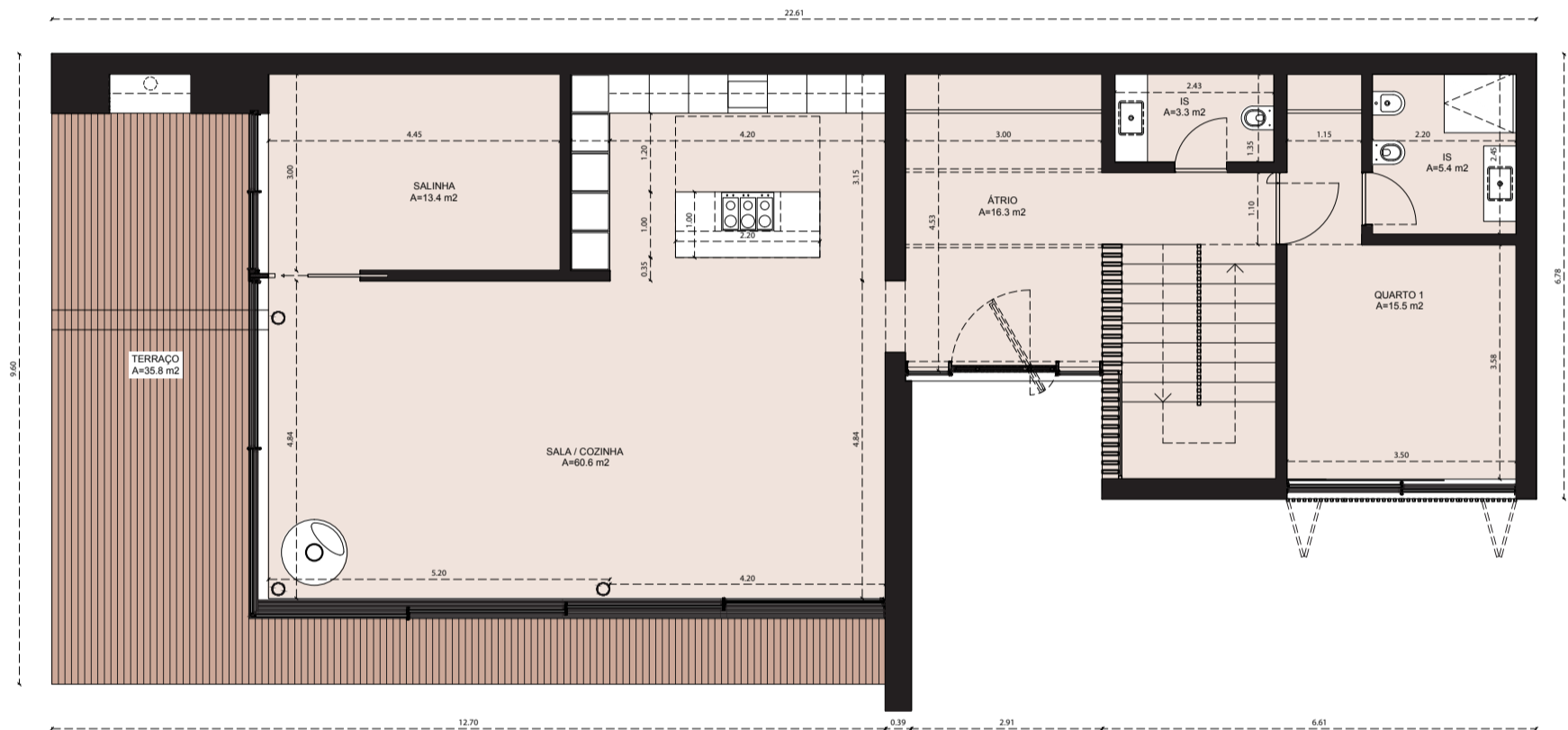
ALDEIA da ROCA

Villa Type A2 Plan
4 bedrooms

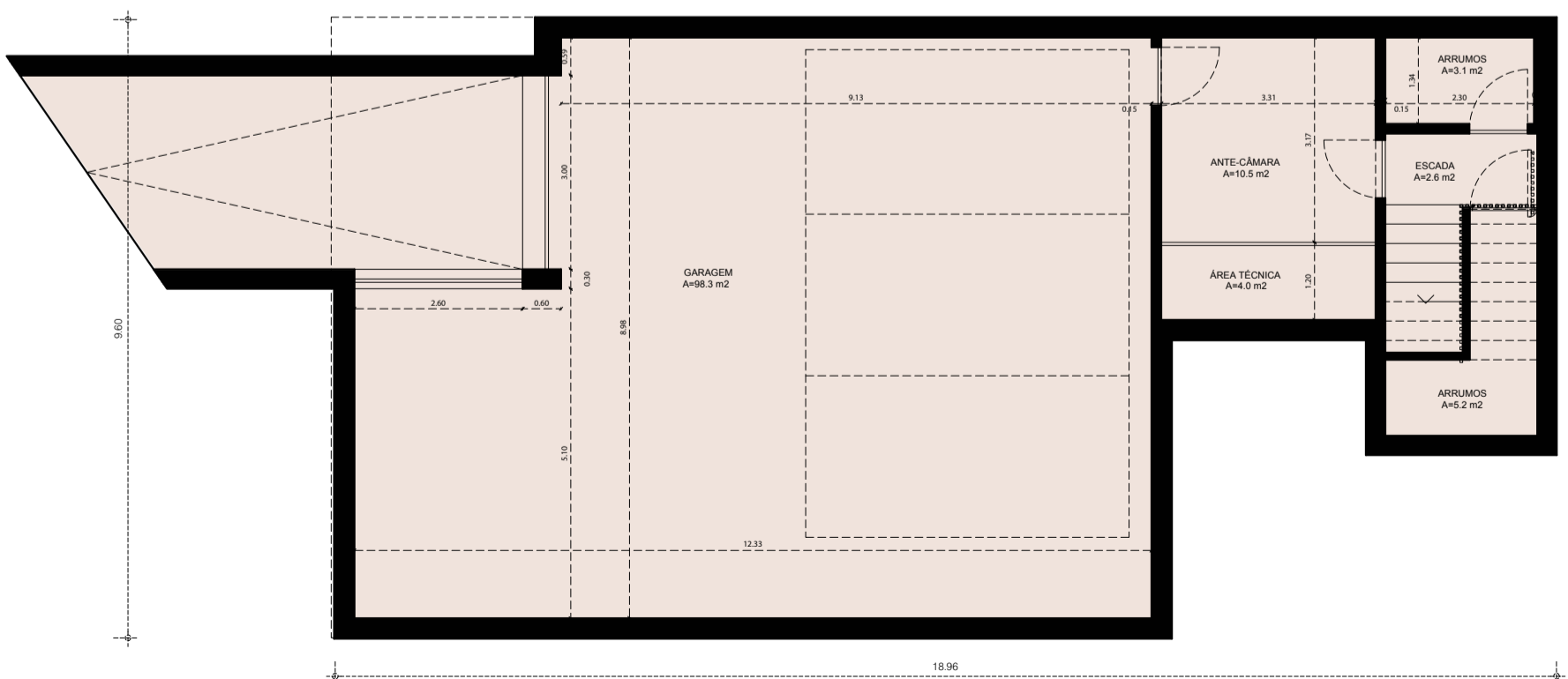
Planta Moradia A2
Tipologia T4



First floor | 1º piso



Ground floor | R/C



Basement | Cave

Villa Type A2 Plan

4 bedrooms

Planta Moradia A2

Tipologia T4



Plot area / Área do lote	533,6 m ²
Gross construction area / Área bruta de construção	320,2 m ²
Gross private area / Área bruta privativa	284,4 m ²
Swimming pool / Piscina	30,0 m ²
Terraces / Terraços	73,4 m ²
Basement (gross area) / Cave (área bruta)	49,8 m ²
Garage (useful area) / Garagem (área útil)	98,3 m ²
Outdoor parking / Estacionamento exterior	25,0 m ²



Architecture | *Arquitetura*

INTERGAUP

Developer | *Promotor*

SPECIAL | CONCEPTS AZOIA

More than a Building

NOTE: The plans presented are merely illustrative and do not confer contractual value.
NOTA: As plantas apresentadas são meramente ilustrativas, não conferindo valor contratual.