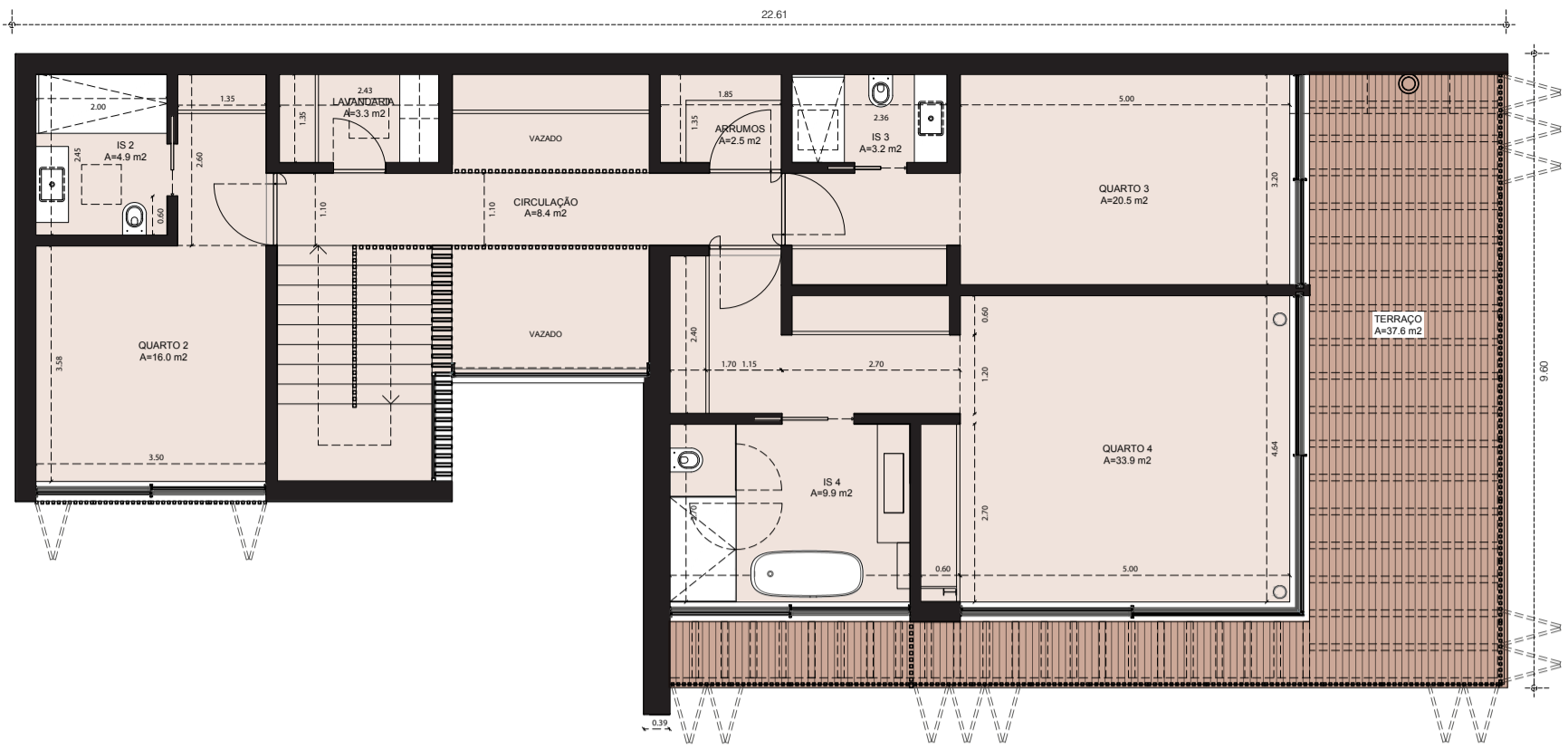


ALDEIA da ROCA

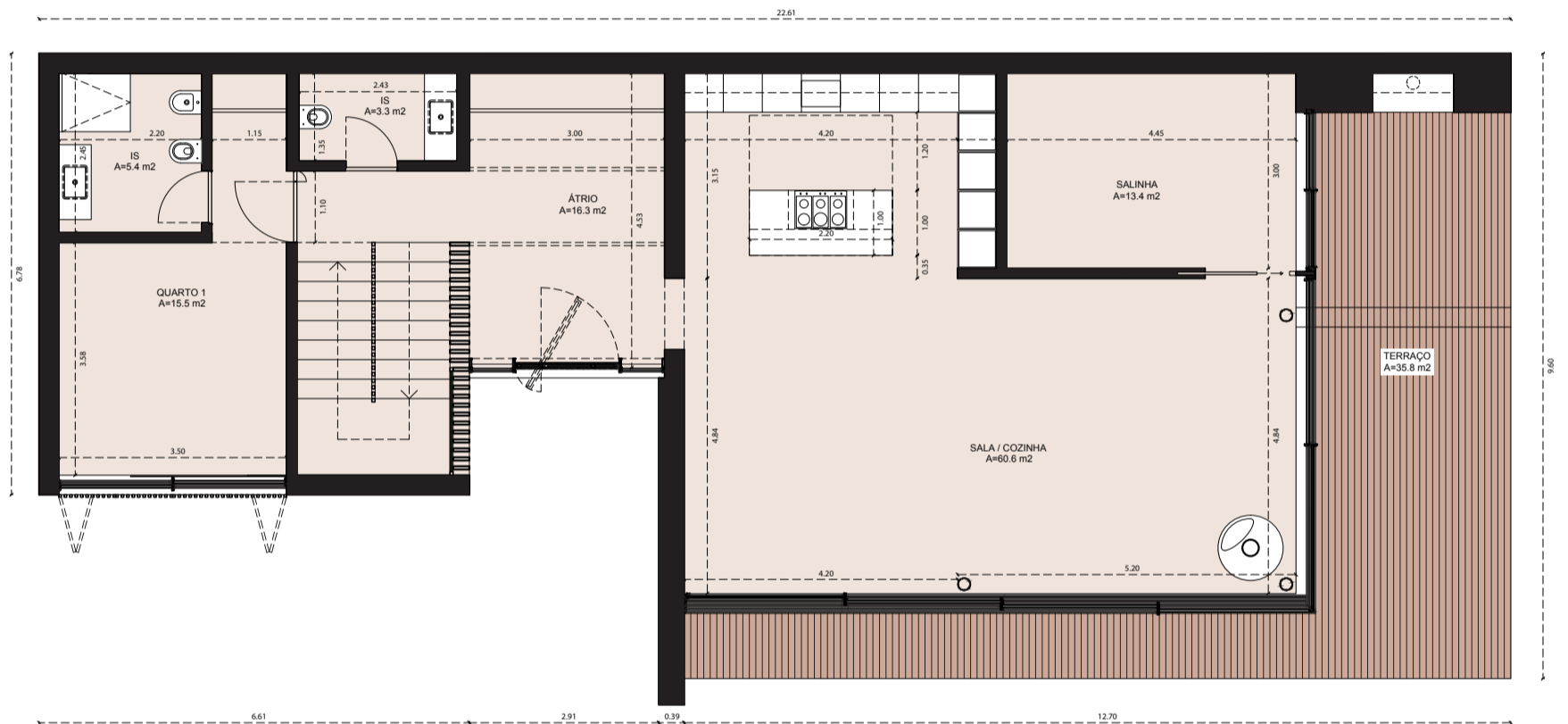
**Villa Type A3 Plan**  
4 bedrooms

---

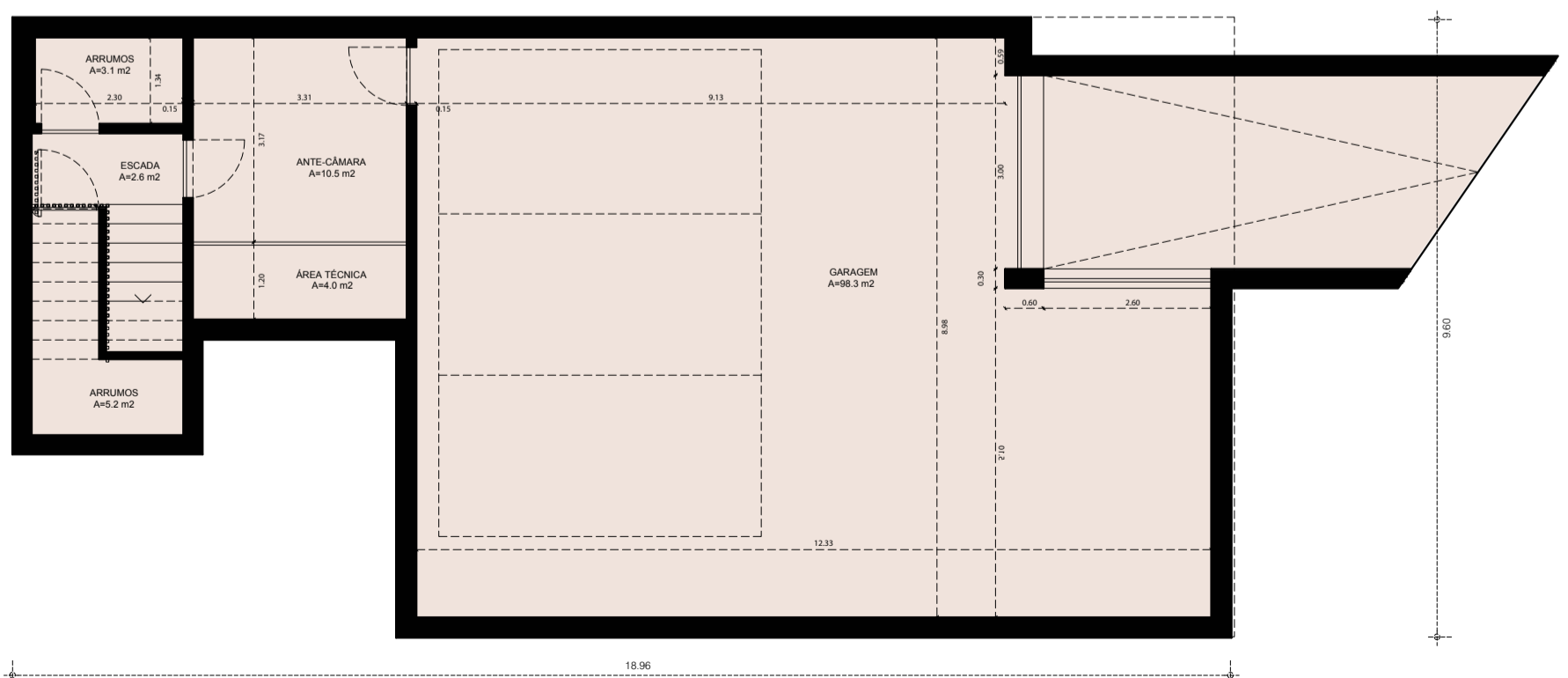
***Planta Moradia A3***  
*Tipologia T4*



First floor | 1º piso



Ground floor | R/C



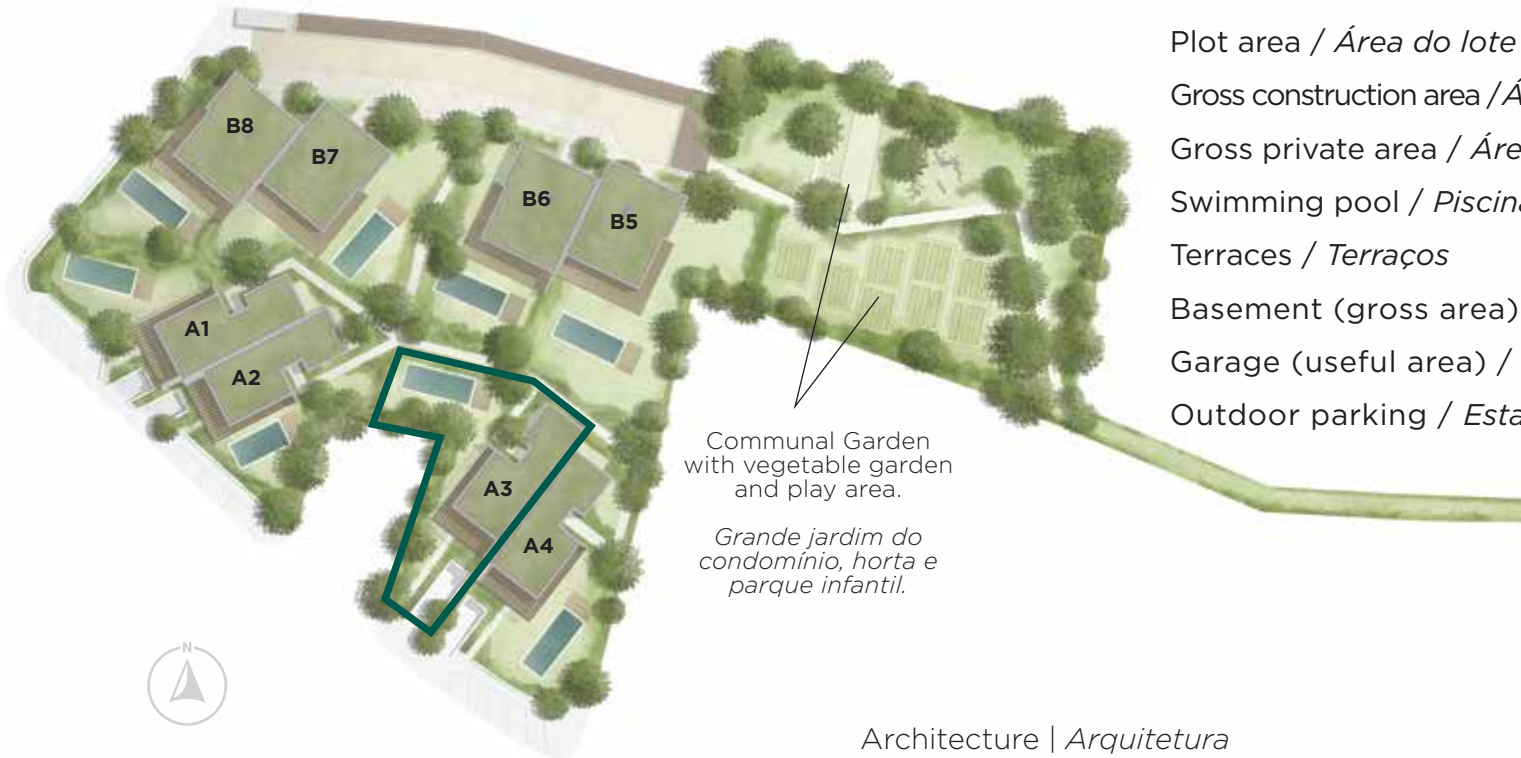
Basement | Cave

# Villa Type A3 Plan

4 bedrooms

## Planta Moradia A3

Tipologia T4



Plot area / Área do lote	597,6 m <sup>2</sup>
Gross construction area / Área bruta de construção	320,2 m <sup>2</sup>
Gross private area / Área bruta privativa	284,4 m <sup>2</sup>
Swimming pool / Piscina	40,0 m <sup>2</sup>
Terraces / Terraços	73,4 m <sup>2</sup>
Basement (gross area) / Cave (área bruta)	49,8 m <sup>2</sup>
Garage (useful area) / Garagem (área útil)	98,3 m <sup>2</sup>
Outdoor parking / Estacionamento exterior	25,0 m <sup>2</sup>



Architecture | *Arquitetura*

**INTERGAUP**

Developer | *Promotor*

**SPECIAL** | CONCEPTS AZOIA

*More than a Building*

NOTE: The plans presented are merely illustrative and do not confer contractual value.  
NOTA: As plantas apresentadas são meramente ilustrativas, não conferindo valor contratual.