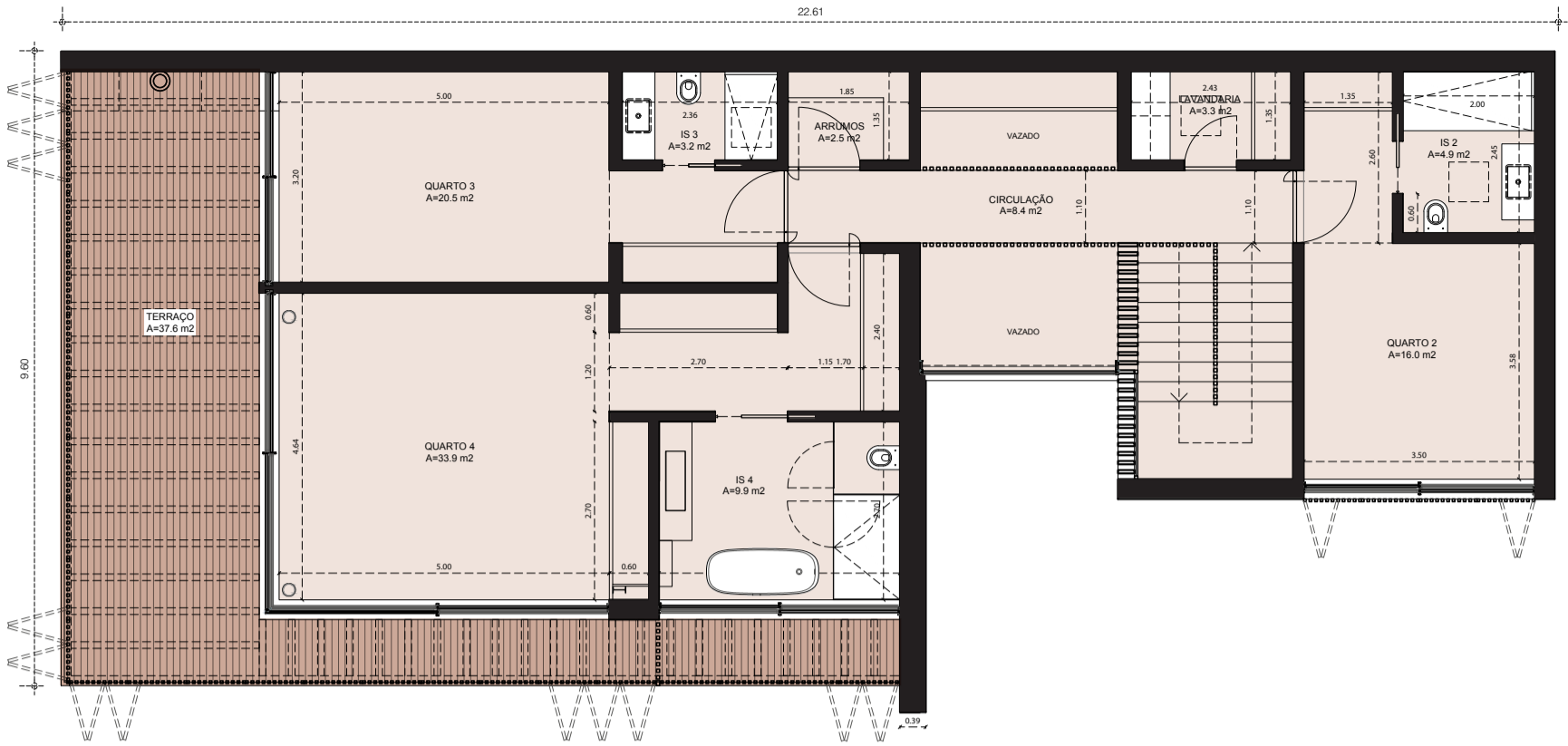


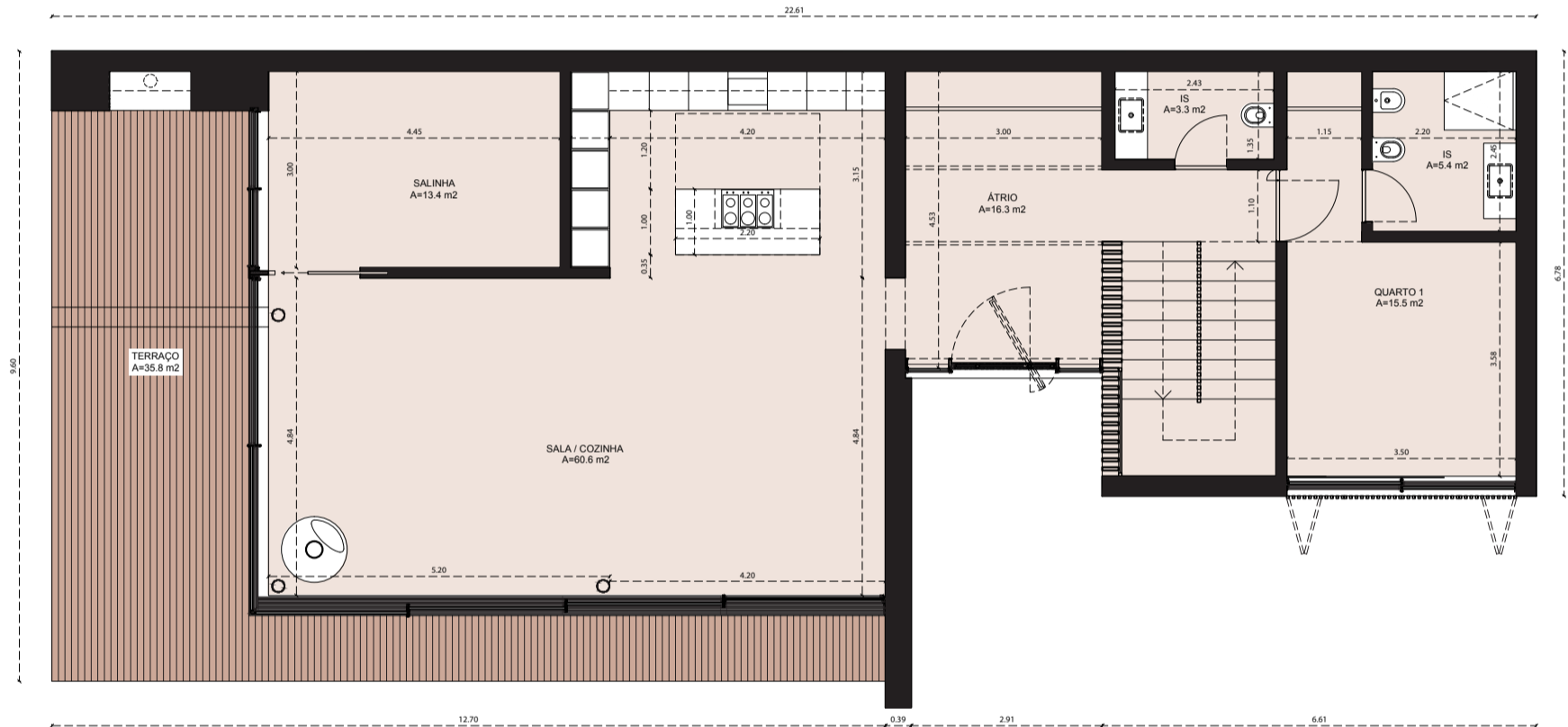
ALDEIA da ROCA

Villa Type A4 Plan
4 bedrooms

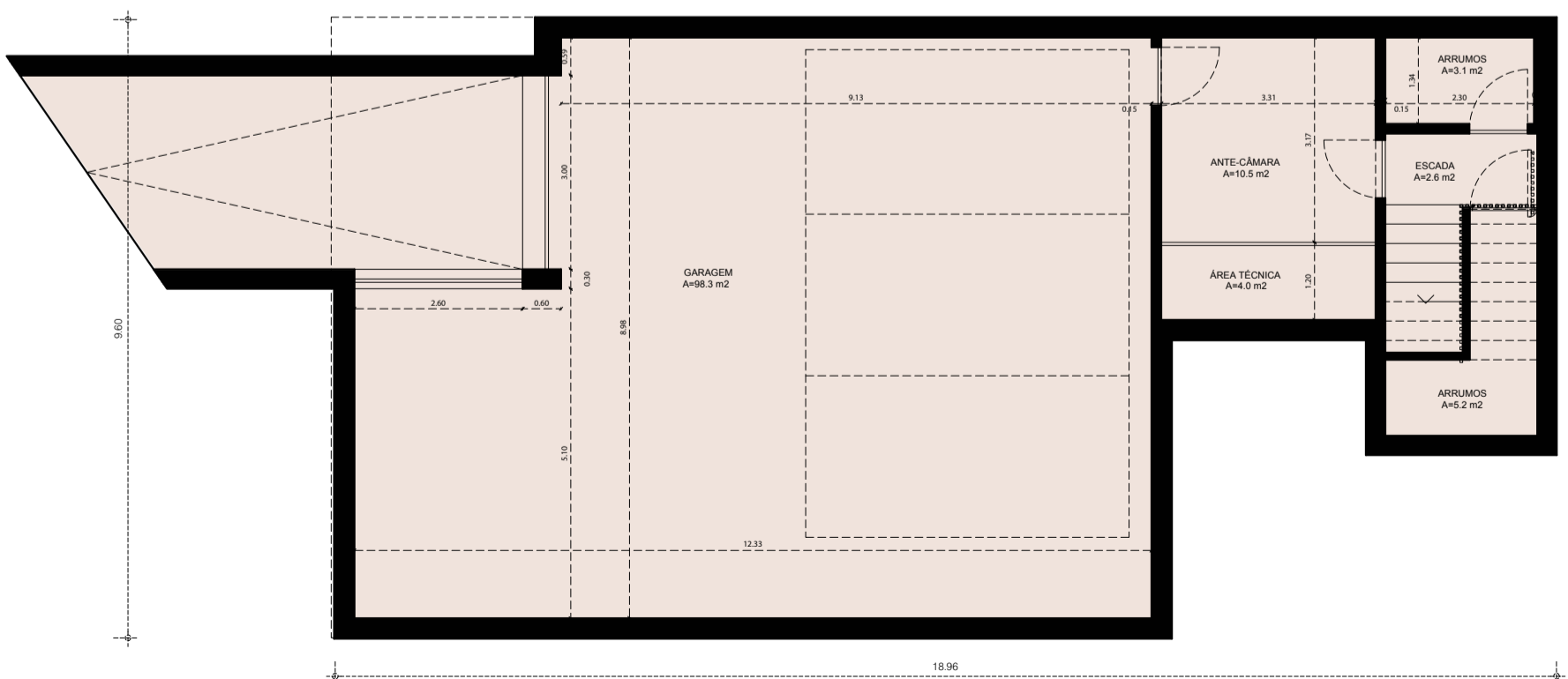
Planta Moradia A4
Tipologia T4



First floor | 1º piso



Ground floor | R/C



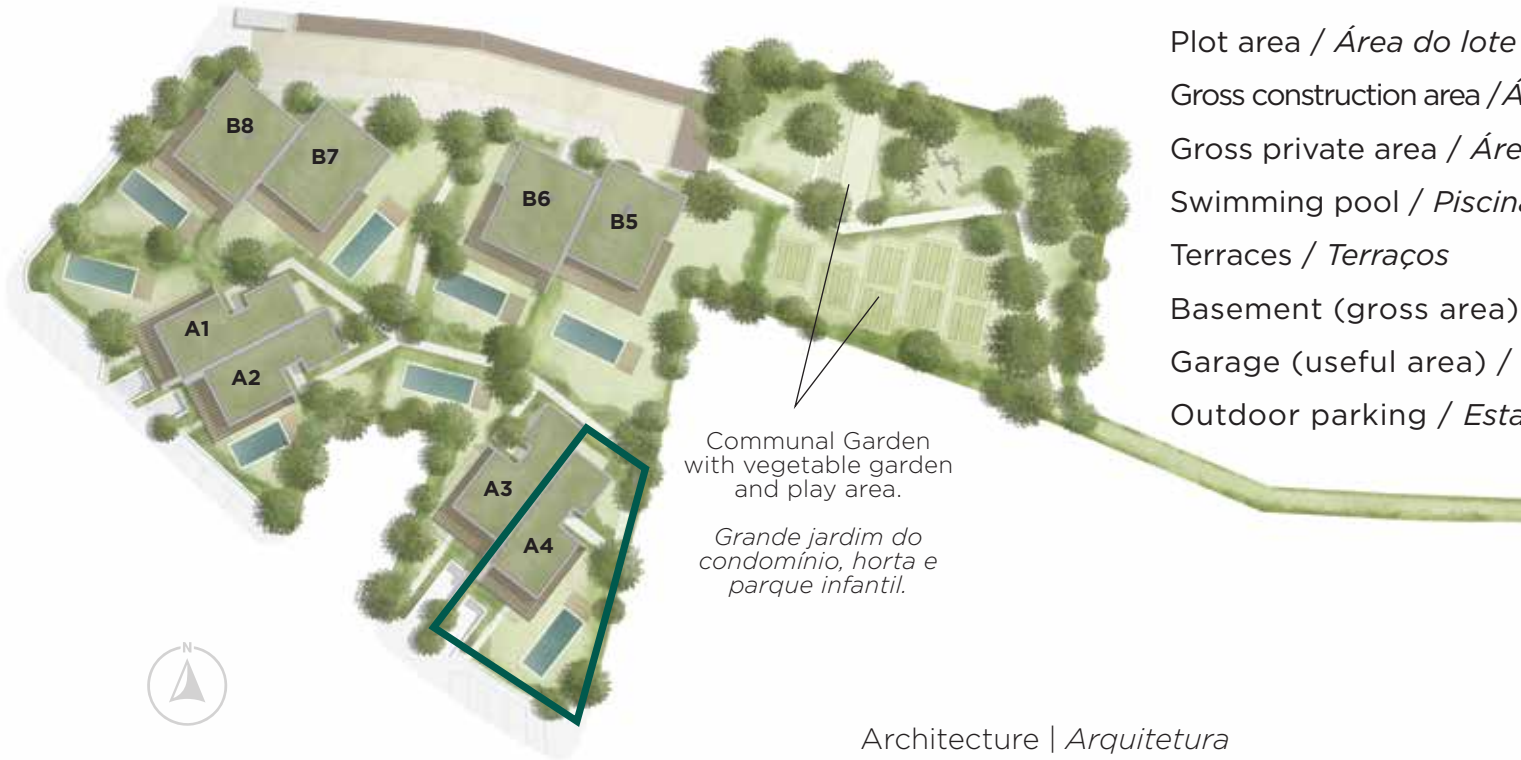
Basement | Cave

Villa Type A4 Plan

4 bedrooms

Planta Moradia A4

Tipologia T4



Communal Garden
with vegetable garden
and play area.

*Grande jardim do
condomínio, horta e
parque infantil.*

Plot area / Área do lote	621,3 m ²
Gross construction area / Área bruta de construção	320,2 m ²
Gross private area / Área bruta privativa	284,4 m ²
Swimming pool / Piscina	40,0 m ²
Terraces / Terraços	73,4 m ²
Basement (gross area) / Cave (área bruta)	49,8 m ²
Garage (useful area) / Garagem (área útil)	98,3 m ²
Outdoor parking / Estacionamento exterior	25,0 m ²

Architecture | Arquitetura

INTERGAUP

Developer | Promotor

SPECIAL | CONCEPTS AZOIA

More than a Building

NOTE: The plans presented are merely illustrative and do not confer contractual value.
NOTA: As plantas apresentadas são meramente ilustrativas, não conferindo valor contratual.